

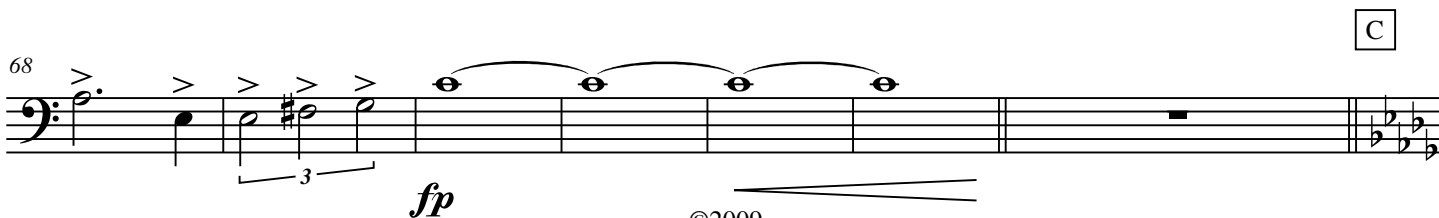
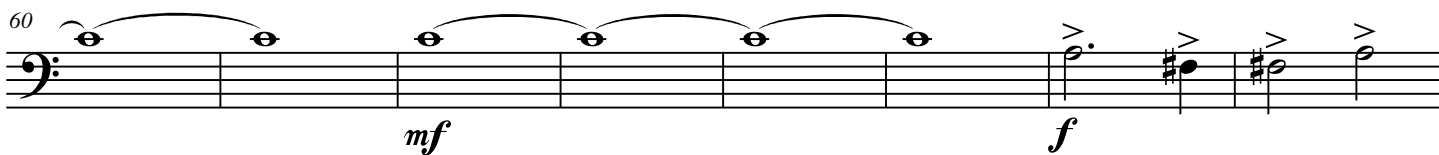
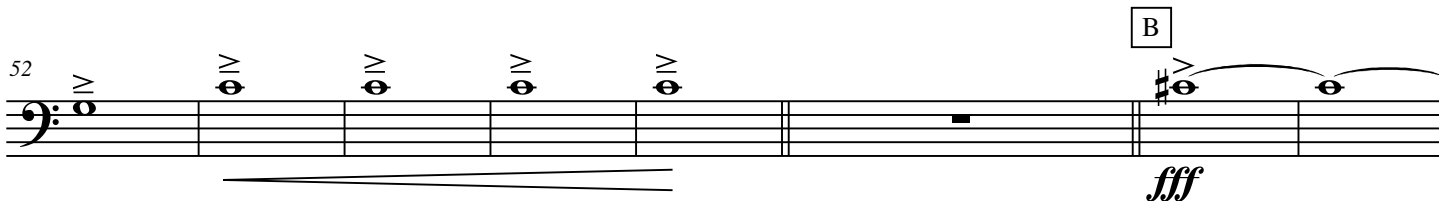
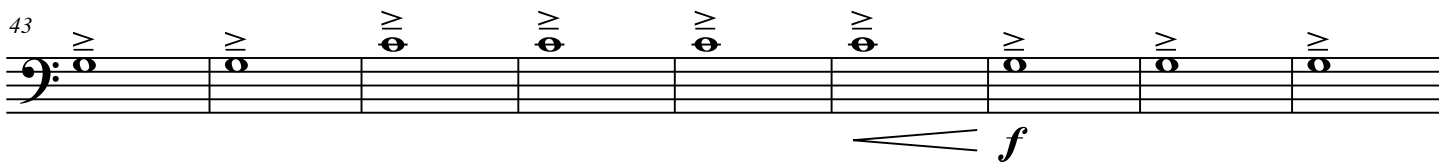
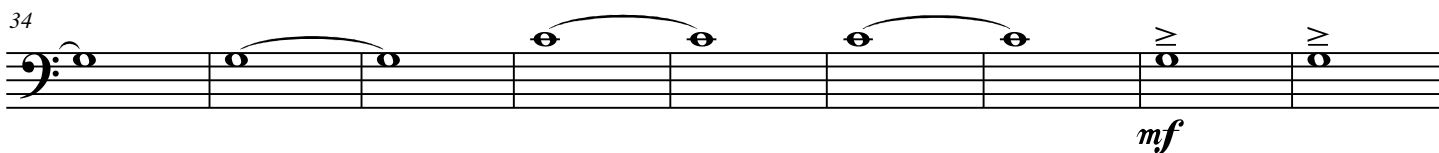
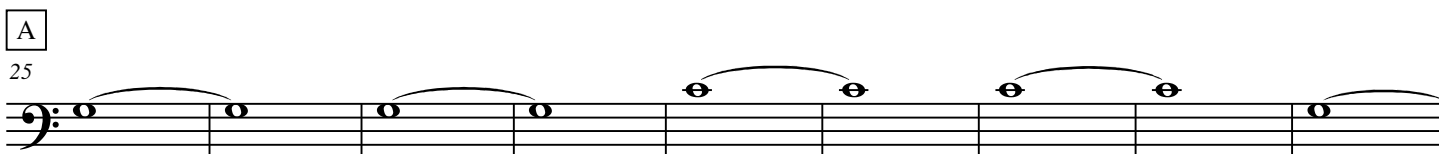
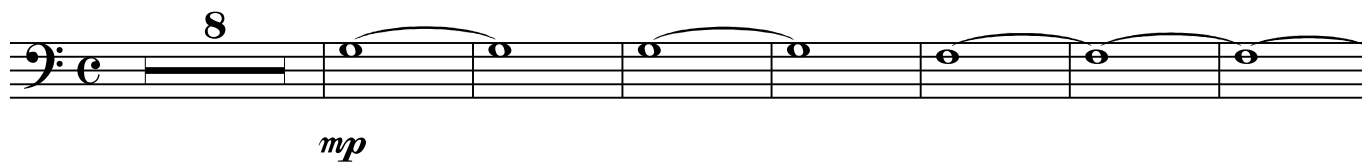
Low Brass 2

Of Glory and Hope

Shaker Melody

Traditional
PhDesign Marching Concepts

...with warmth, optimism and hope (170 bpm)



Of Glory and Hope

2

Profound!

75

75-82: Bass clef, key signature of three flats. Notes: G2, A2, Bb2, C3, D3, E3, F3, G3, A3, Bb3, C4, D4, E4, F4, G4, A4, Bb4, C5. Dynamics: *fff* (75-77), *fff* (78-80), *fp* (81-82). Accents (>) are present on notes 75, 76, 77, 78, 79, 80, 81, 82.

83

83-90: Bass clef, key signature of three flats. Notes: G2, A2, Bb2, C3, D3, E3, F3, G3, A3, Bb3, C4, D4, E4, F4, G4, A4, Bb4, C5. Dynamics: *fff* (83-85), *fff* (86-88), *fp* (89-90). Accents (>) are present on notes 83, 84, 85, 86, 87, 88, 89, 90.

91

91-97: Bass clef, key signature of three flats. Notes: G2, A2, Bb2, C3, D3, E3, F3, G3, A3, Bb3, C4, D4, E4, F4, G4, A4, Bb4, C5. Dynamics: *f* (91-97). Accents (^) are present on notes 91, 92, 93, 94, 95, 96, 97.

98

98-105: Bass clef, key signature of three flats. Notes: G2, A2, Bb2, C3, D3, E3, F3, G3, A3, Bb3, C4, D4, E4, F4, G4, A4, Bb4, C5. Dynamics: *mf* (98-100), *mp* (101-105). Accents (^) are present on notes 98, 99, 100, 101, 102, 103, 104, 105.

106

106-114: Bass clef, key signature of three flats. Notes: G2, A2, Bb2, C3, D3, E3, F3, G3, A3, Bb3, C4, D4, E4, F4, G4, A4, Bb4, C5. Dynamics: *fp* (106-108), *fff* (109-111), *ffff* (112-114). Accents (>) are present on notes 106, 107, 108, 109, 110, 111, 112, 113, 114.

115

115-118: Bass clef, key signature of three flats. Notes: G2, A2, Bb2, C3, D3, E3, F3, G3, A3, Bb3, C4, D4, E4, F4, G4, A4, Bb4, C5. Dynamics: *fff* (115-118). Accents (>) are present on notes 115, 116, 117, 118.